

FANTASTIC® SHADE CLIPS

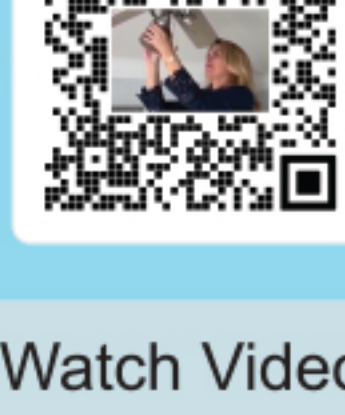


PUTTING YOUR SHADE TOGETHER INSTALLATION GUIDE

INSTALLATION SAFETY RULES AND DISCLAIMERS

- ⚠ Shut the power off at the circuit breaker box before beginning.
- ⚠ Small Parts.
KEEP OUT THE REACH OF CHILDREN.
- ⚠ This product should be installed by an adult.
- ⚠ These products are made with resistant materials, but they should be checked for wear frequently.
- ⚠ We are not responsible for the integrity of the electrical box or fans installation that our product is intalled on.
- ⚠ If you are not sure of the integrity of your fans install
DO NOT USE THIS PRODUCT.
- ⚠ This product may NOT work with a fan that has an integrated light fixture unless an additional strap is purchased.
- ⚠ It is suggested to not use a shade 5 lbs or more with these parts.

PUTTING YOUR SHADE TOGETHER



Watch Video

Before putting your shade together be sure to wash your hands, and that you are working on a clean surface.

You will find two rings and your fantastic shade in the box.

You will find one **plain ring**, that looks like this one.



And a second utility **spider ring** with three spiders that looks like this.



7 EASY STEPS TO INSTALL



Step 1

Take the plain ring and roll it around the shade clipping each clip onto the ring as you roll it.

Step 2

Continue until you clipped the last clip onto the ring. Make sure to pull the shade as tight as you possibly can.

Step 3

Take the two Velcro ends and attach them together.

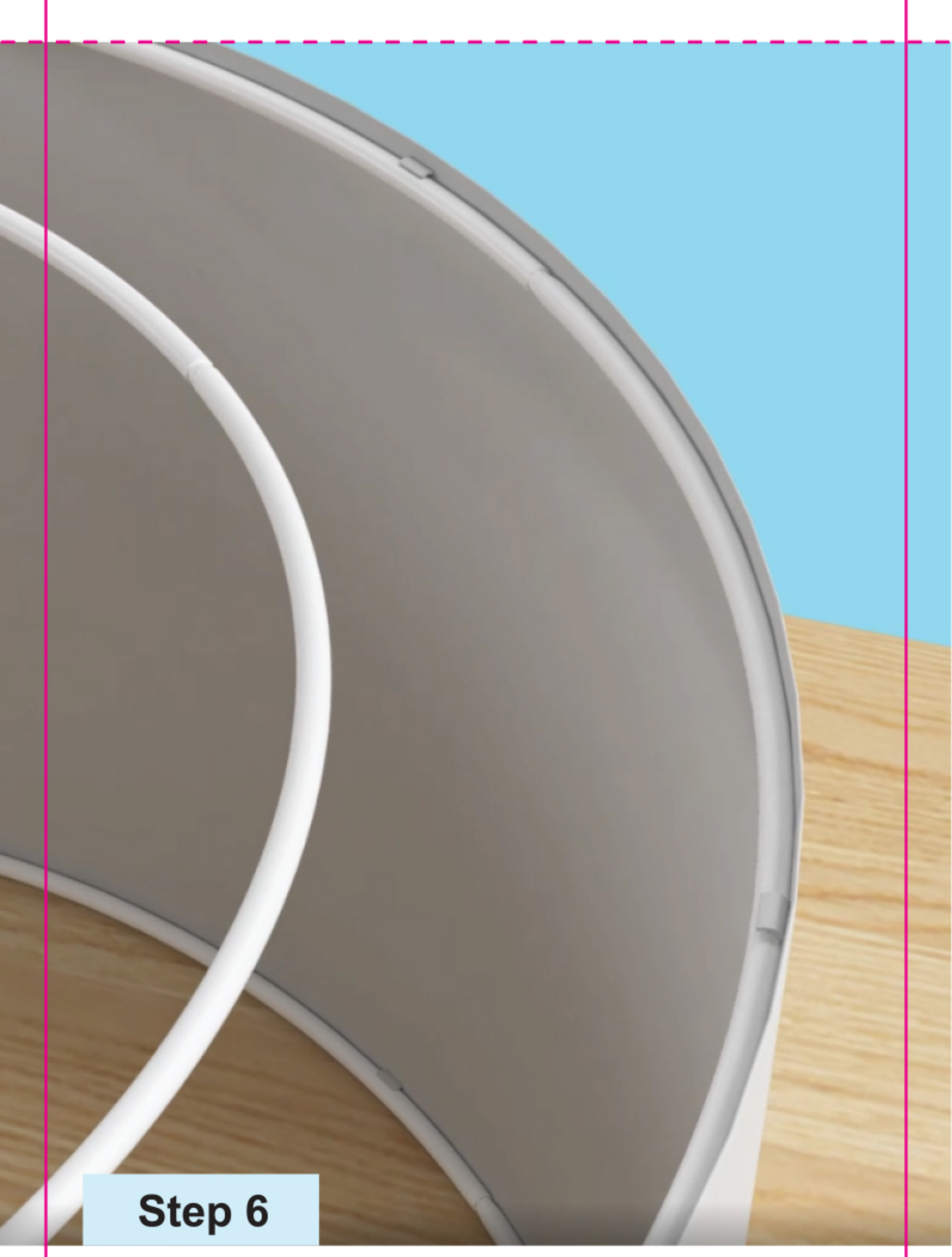
Step 4

Take the shade and place it on a table with the ring you just finished clipping facing down.



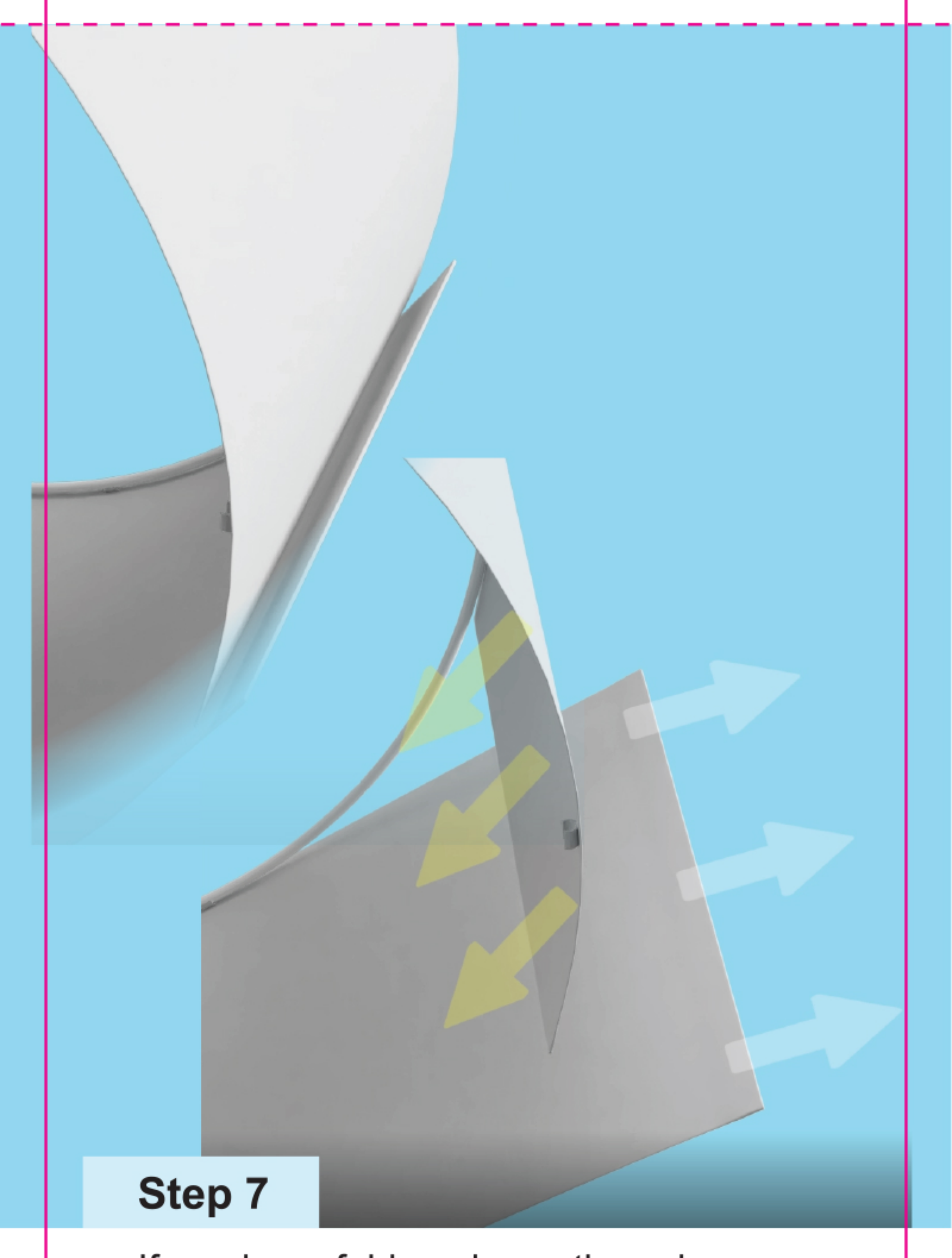
Step 5

Now take the ring with the three spider arms and clip it onto the shade one clip at a time until you clipped the last one.



Step 6

Check to make sure there are no folds around the shade and the shade is tight around the rings.



Step 7

If you have folds, release the velcro and pull the shade till the folds are gone and re-attach the Velcro.

You are now ready to hang your Fantastic Fan Shade.

Result:



Note

- Now please see the clips and strap installation guide on how to attach your shade.



Watch Video

HOW TO USE WITH AN INTEGRATED FAN LIGHT

To see how to use with an integrated fan light, Scan the QR Code or go to:

www.fantasticshadeclips.com/integratedfan

Fantastic Shade Clips express enthusiasm and passion, a collective energy, to experience new beauty in your space while enhancing energy savings of our resources.

With great gratitude.

©2022. FAN-TASTIC SHADE AND CLIPS LLC.
DIST. by Fantastic Shades and Clips LLC.
Fort Lauderdale, FL. 33301 - USA.
MADE IN CHINA

This document contains proprietary information that is protected by copyright. No other part of this document may be photocopied, reproduced or translated to another language without prior written consent of Fantastic Shade Clips, LLC.

copyright 2022 Fantastic Shade Clips, LLC.
USA
FantasticShadeClips.com

FANTASTIC® SHADE CLIPS